



PRODUCT CATALOGUE



Chongqing Dujiang Composites Co., Ltd.

Address: Northwest of Damotan, Tianma Village, Xiema Street, Beibei District, Chongqing, P.R.China

Tel: +8615823184699 / +8602367853804

Email: info@cqfiberglass.com / marketing@frp-cqdj.com

Web: www.cqfiberglass.com / www.frp-cqdj.com



COMPANY PROFILE

CQDJ focuses on the deep processing of new glass fiber materials and supporting the upstream industry chain. The products cover glass fiber roving, as well as alkali-resistant fiberglass mesh, Glass fiber mat, fiberglass woven roving and other products and fabrics. The company has successively passed ISO9001 quality management system, ISO45001 occupational health and safety system, ISO14001 environmental management system certification, high-tech enterprise certification, and safety production standardization certification.



Fiberglass Product Catalog



Fiberglass Woven Roving		
E-Glass Fiberglass	Woven Roving	04
Fiberglass Multiaxial	Fabric	05

Fiberglass Mesh	
Fiberglass Mesh	08
Fiberglass Adhesive Tape	09

Fiberglass Mat	
Chopped Strand Mat	12
Surface Mat	13
Woven Roving Combo Mat	14
PP Core Combo Mat	15
Fiberglass Stitched Mat	16
Surface Veil Stitched Combo Mat	17

Assembled Fiberglass Roving	
Fiberglass Direct Roving	20
Fiberglass Spray-up Roving	21
Fiberglass Panel Roving	22
Fiberglass Roving For Chopping	23
Fiberglass LFT Roving	23
Fiberglass SMC Roving	24





E-GLASS FIBERGLASS WOVEN ROVING

Fiberglass Woven Roving is made of fiberglass direct rovings in plain and twill weaving method. The input rovings are designed to give controlled wet-out and excellent laminate properties.

It is compatible with polyester, vinyl ester and epoxy resin and widely used in hand machine production.

Product Specification

Item	TEX		Count Of Cloth (root/cm)		Unit Area Mass (g/m)	Breaking Strength (N)		Width (mm)
	Wrap Yarn	Weft Yarn	Wrap Yarn	Weft Yarn		Wrap Yarn	Weft Yarn	
EWR200	180	180	6	5	200±15	1300	1100	30-3000
EWR300	300	300	5	4	300±15	1800	1700	30-3000
EWR400	576	576	3.6	3.2	400±20	2500	2200	30-3000
EWR500	900	900	2.9	2.7	500±25	3000	2750	30-3000
EWR600	1200	1200	2.6	2.5	600±30	4000	3850	30-3000
EWR800	2400	2400	1.8	1.8	800±40	4600	4400	30-3000

Remark: Above are standard specifications, other customized specifications to be discussed.

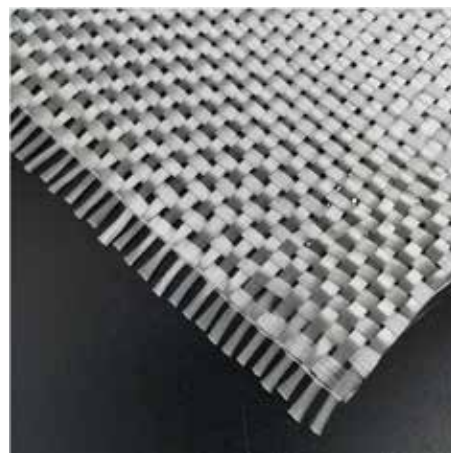
Product Images



200g



400g



600g



FIBERGLASS MULTIAXIAL FABRIC

Multi-axial includes Uni-Directional, Biaxial, Triaxial and Quadraxial Fabrics.

The entire Partial warp, weft and double bias plies are stitched into a single fabric.

With our filament crimp in woven roving, the Multi-axial fabrics are in advantage of high strength, excellent stiffness, low weight, and thickness, as well as improved fabric surface quality. The fabrics can be combined with chopped strand mats or tissue or nonwoven materials.

Product Specification

Item	Description
Uni-Directional Fabric (0° or 90°)	The density of 0° Uni-Directional Fabric can be 300g/m ² -900g/m ² and density of 90° can be 150g/m ² -1200g/m ²
Biaxial Fabric (0°/90° or ±45°)	The density can be 300g/m ² ~2400g/m ² , can be which a layer of Chopped Strands.
Triaxial Fabric (0°/+45°/-45°) / (+45°/+90°/-45°)	The density can be 450g/m ² ~1800g/m ² , can be which layer of Chopped Strands.
Quadraxial Fabric (0°/+45°/90°/-45°)	The density can be 600g/m ² -2000g/m ² , can be which layer of Chopped Strands.

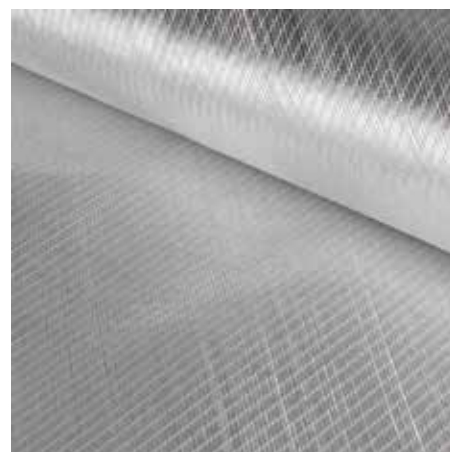
Product Images



Uni-Directional Fabric



Triaxial Fabric



Biaxial Fabric



Product Application

End-Use Markets

(boats, vessels, plane and automotive parts, furniture, sports and other areas)



Hand lay-up, filament winding, pultrusion, continuous laminating as well as closed molds. Typical applications are found in boat building, transportation, anticorrosion, plane and automotive parts, furniture, and sports facilities.

Workshops

(boats, vessels, plane and automotive parts, furniture, sports and other areas)



Storage

Pallet Packaging

Packed in woven boxes/bags

Pallet size: 960×1300





Package

End-Use Markets

(boats, vessels, plane and automotive parts, furniture, sports and other areas)

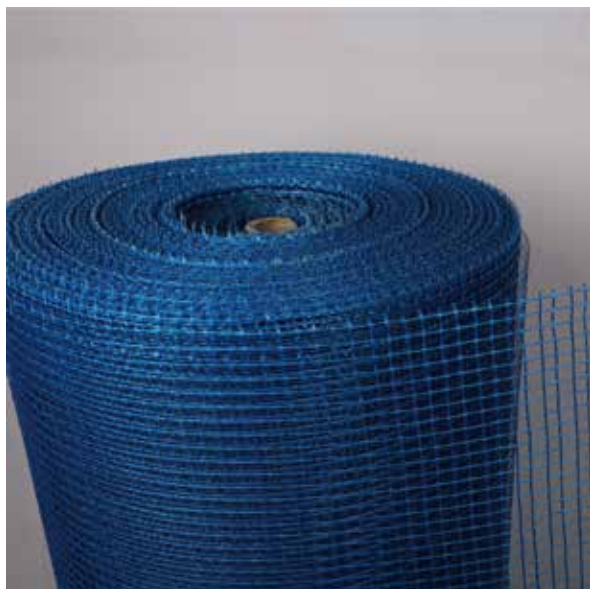


Woven Roving products must be stored in a cool, dry area. The recommended temperature is between 10 and 35 °C, and the relative humidity between 35 and 75 %. If the product is stored at low temperatures (below 15 °C), it is recommended to condition the material in a workshop at least 24 hours before use.

Note

If the storage temperature is less than 15°C, it would be advisable to put the pallets in the processing area for 24 hours before use. This is to avoid condensation. It is recommended that products be consumed using a first-in, first-out method within 12 months of delivery.





FIBERGLASS MESH

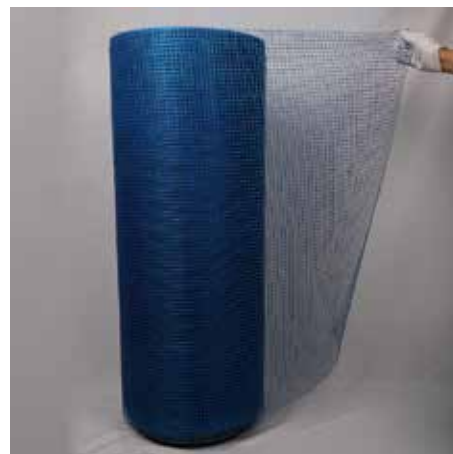
Fiberglass mesh is mainly alkali-resistant fiberglass fabric, made of c or e glass fiber yarn (the main ingredient is a silicate, good chemical stability) through a special weaving technique, then coated by ant-alkali reinforcing agent, and treated with high-temperature heat finishing. It's an ideal engineering material for construction and decoration.

After surface treatment, this alkali-resistant fiberglass mesh has excellent properties including water-resistance, alkali-resistance, flexibility, softness, and resistance to aging. It is widely used in reinforcing walls, natural marble, plaster boards, artificial stone materials, and exterior insulation finishing systems. It is also widely used for renovating the building surface.

Product Specification

Mesh Weight	Mesh Size(mm)	Size	Color
50g-320g	4*4	5*5	White
	5*5	4*5	Yellow
	8*8	5*6	Black
	10*10	6*6	White

Product Images





FIBERGLASS ADHESIVE TAPE

The fiberglass self-adhesive tape is made by cutting high-quality fiberglass fabric coated with cyclic acid copolymer. Because fiberglass has a stable chemical property and is not liable to oxidate, the fiberglass self-adhesive tape for joint filling has superiority.



SOME OTHER FEATURES

- Very strong self-adhesive
- Sticks well in cold weather
- Will not absorb moisture
- Will not be affected by mold
- Fire resistant
- Will not tear
- Will not shrink

Product Specification

Mesh Weight	Mesh Size	Size	Package	Color
50-200g	8×8 9x9	5cm x 45m/roll 5cm x 90m/roll	Shrink package/ packed in carton	White
				Yellow
				Blue
				Black

Product Images



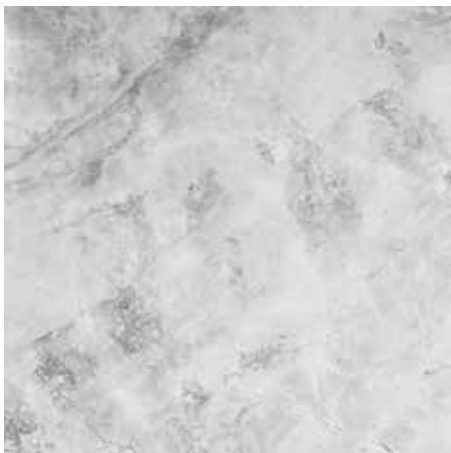
Application for this kind of fiberglass adhesive tape:

Seaming drywall joints

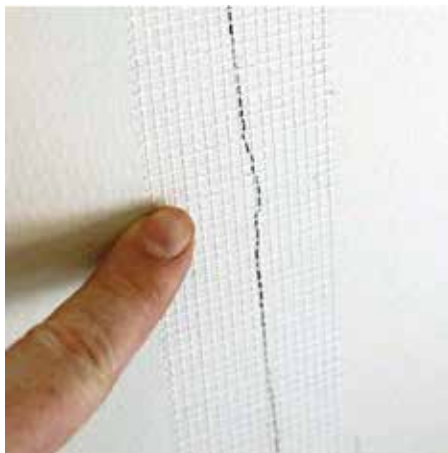
Reinforce or repair wall cracks, plaster board cracks, and cement board



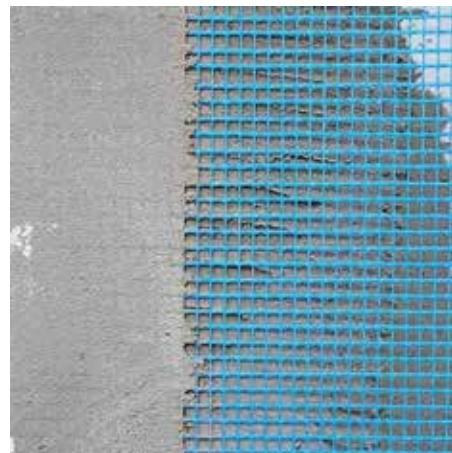
Product Application



Marble



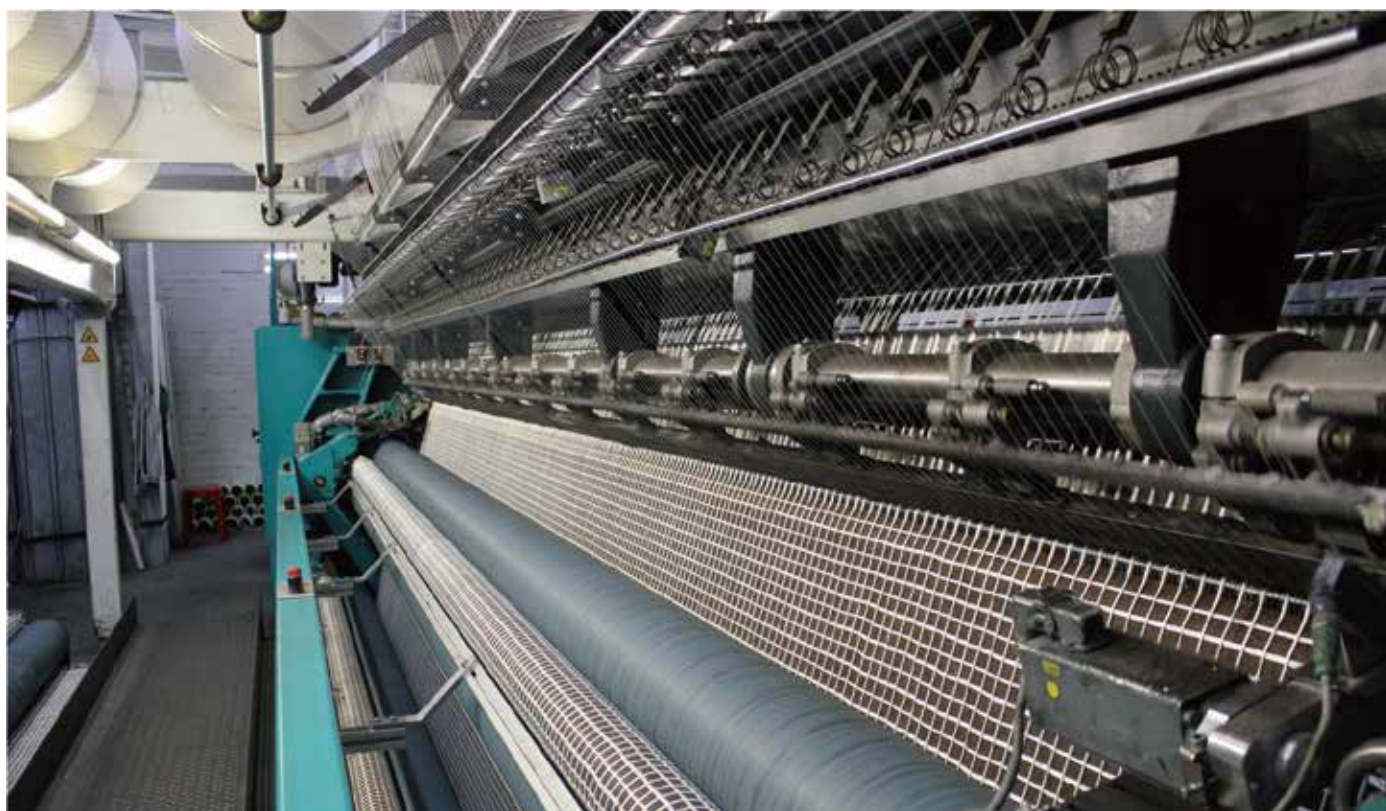
Wall repair



Wall reinforcement

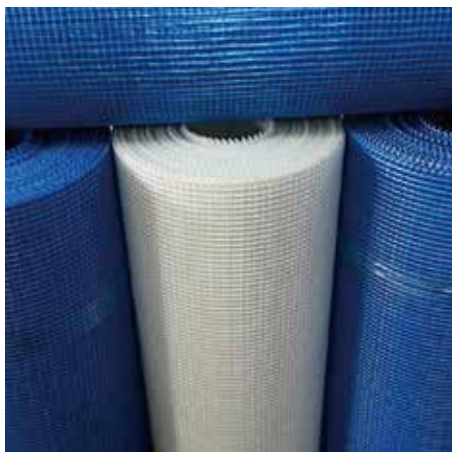
1. Wall reinforced material (such as fiberglass wall mesh, GRC wall panels etc)
2. Reinforced cement products.
3. Used for granite, mosaic, marble back mesh etc.
4. Waterproof membrane fabric, asphalt roofing.
5. Framework material for reinforced plastics, rubber products.
6. Fire board.
7. Grinding wheel base fabric.
8. Road surface with geogrid.
9. Construction caulking tape etc. Fiber glass mesh netting for facade.

Workshops





Storage



Package





CHOPPED STRAND MAT

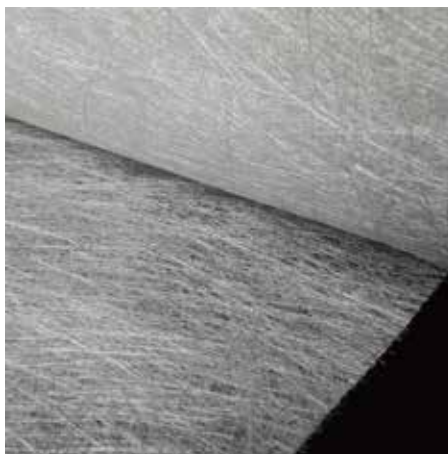
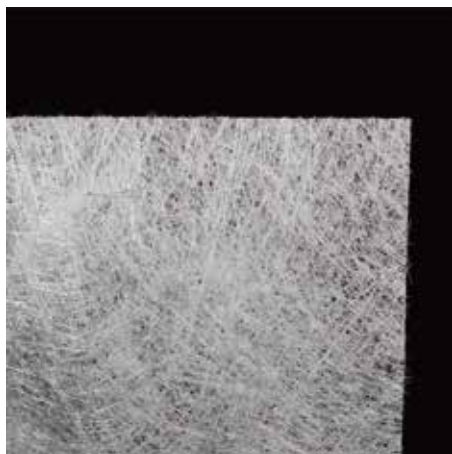
Fiberglass Chopped Strand Mat is made of E Chopped Strands, which are randomly distributed and bonded together with a polyester binder in powder or emulsion form. The mats are compatible with unsaturated polyester, vinyl ester, and other various resins, widely used in the manufacturing of large-size FRP products, with relatively big R angles.

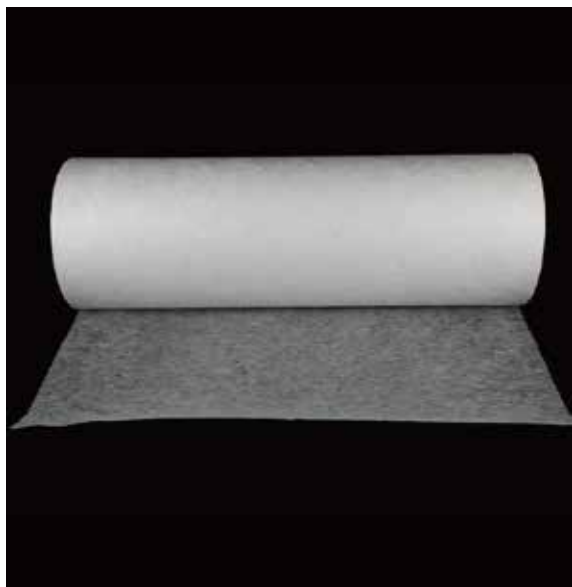
Such as shipbuilding, water towers, storage tanks, and high tensile strength will not break after 10-20 meters of unwinding.

Product Specification

Specification	Binder	Density (gsm)	Deviation(10%)
CSM100	Powder/Emulsion	100	±5-10
CSM120	Powder/Emulsion	120	±5-10
CSM300	Powder/Emulsion	300	±5-10
CSM450	Powder/Emulsion	450	±5-10
CSM600	Powder/Emulsion	600	±5-10

Product Images





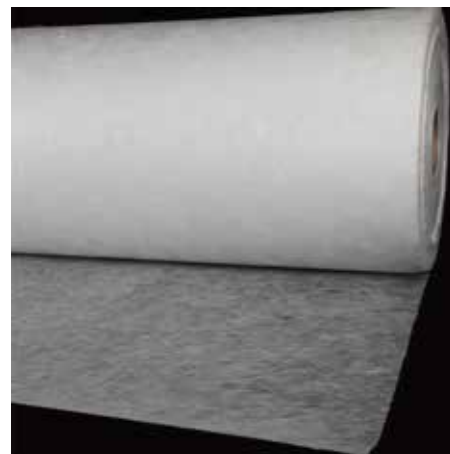
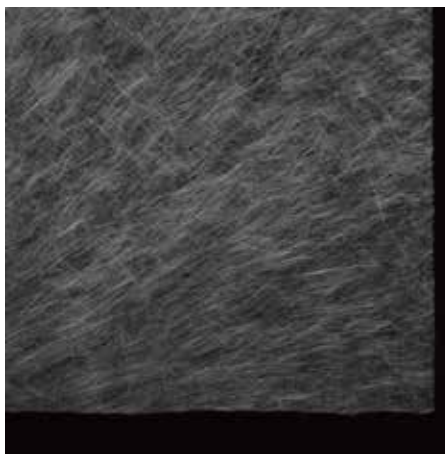
SURFACE MAT

Fiber glass surface mat have E and C glass, it is a good material for pipe production.

Product Specification

Item	Density(g/m ²)	Width(mm)
DJ25	25±2	45/50/80mm
DJ30	25±2	45/50/80mm

Product Images





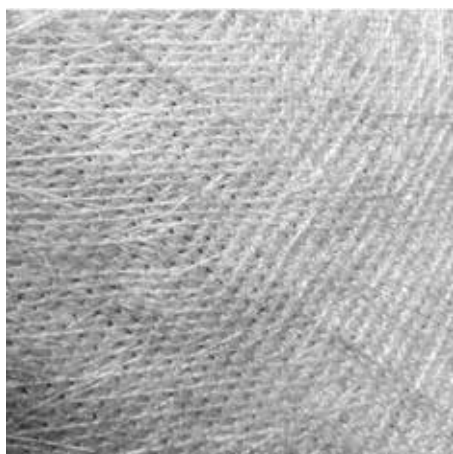
WOVEN ROVING COMBO MAT

Woven Roving Combination fabric is a new type of fiber glass fabric, it is made by Chopped strand mat and woven roving. The chopped strands layer is from 100g/ m² -900g/ m², woven roving can be from 300g/ m² --1500g/ m². It is suitable Polyester resin, Vinyl resin, Epoxy and Phenolic resin. It is mainly used in the boat, car panel, automotive and structural section.

Product Specification

Density (g/m ²)	Deviation (%)	Woven Roving (g/m ²)	CSM(g/m ²)	Stitching Yarn(g/m ²)
610	±7	300	300	10
810	±7	500	300	10
910	±7	600	300	10
1060	±7	600	450	10

Product Images





PP CORE COMBO MAT

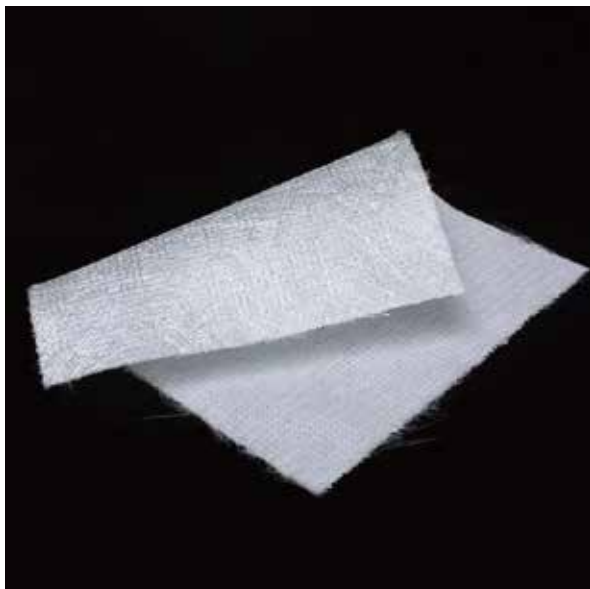
PP Core Combination Mat is a new type of fiber glass fabric , it is made by chopped strand mat, Non-woven PP Core fabric and woven roving and other difference layer material. It is suitable Polyester resin, Vinyl resin, Epoxy and Phenolic resin. It is mainly used in the RTM process, to manufacture the automotive, train parts.

Product Specification

Density (g/m ²)	Chopping layer	Woven Roving (g/m ²)	Chopping Layer
480	300	0	0
780	300	0	300
1080	450	0	450
1450	600	0	600
2050	900	0	900
2450	1100	0	1100

Product Images





FIBERGLASS STITCHED MAT

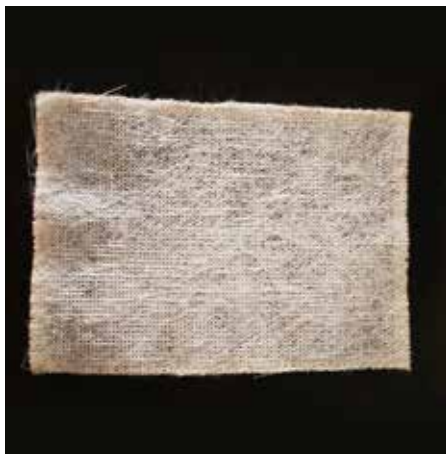
Stitch Chopped Strand Mat is a new type of fiber glass fabric, it is stitched by 50mm Chopped strands which cut from CSM roving. The density can be from 200g/ m² to 900g/ m² , width from 50mm to 3100mm.

This fabric is suitable for the Polyester resin, Epoxy resin, Vinyl and Phenolic resin. It is mainly used in Pultrusion section, pipe lining, FRP boat, insulation panel for Hand-lay-up and RTM process.

Product Specification

Densit (g/m ²)	Deviation (%)	CSM (g/m ²)	Stitching Yarn (g/m ²)
235	±7	225	10
310	±7	380	10
390	±7	380	10
460	±7	450	10
910	±7	900	10

Product Images





SURFACE VEIL STITCHED COMBO MAT

Surface Veil Stitched Combo Mat is one layer of surface veil(fiberglass veil or polyester veil) combined with various of fiberglass fabrics, multiaxials and chopped roving layerby stitching them together. The base material can be only one layerorseveral layers of different combinations.

It can be mainly applied in pultrusion, resin transfer molding, continuous board making and other forming processes.

Product Specification

Density (g/m ²)	Stitched mat (g/m ²)	Surface mat (g/m ²)	Stitching Yarn (g/m ²)	Variety
370	300	60	10	EMK
505	450	45	10	EMK
1495	1440	45	10	LT
655	600	45	10	WR

Product Images





Product Application

End-Use Markets

(boats, vessels, plane and automotive parts, furniture, sports and other areas)



End-Use Markets

Shipbuilding, water towers, storage tanks/ FRP, garbage tanks, sanitary wares boat, car panel, train parts, and automotive/ mannequin products, pipe lining, and handicrafts

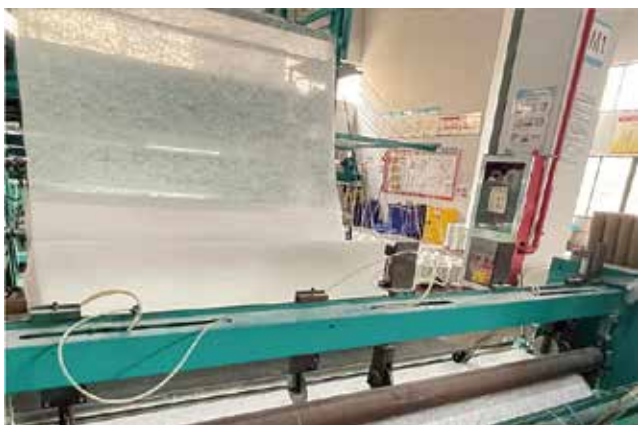
Workshops



Chopped strands mat



Fiberglass surface mat



Fiberglass core mat



PP fiber



Package

End-Use Markets

(boats,vessels,plane and automotive parts,furniture,sports and other areas)





FIBERGLASS INTEGRATED SUPPLIER

We provide fiberglass from major advanced pool kilns in China.

FIBERGLASS DIRECT ROVING

Direct Roving is coated with a silane-based sizing compatible with unsaturated polyester, vinyl ester and epoxy resins and designed for filament winding, pultrusion and weaving applications.

Suitable for use in pipes, pressure vessels, gratings, profiles, boats, and chemical storage tanks.

Product Specification

Product Name	Tex	Typical Applications	Compatible Resin
386T	600-4800	Ordinary FRP pipes and storage tanks	UP,EP,VE,PF
386H	600-4800	Pressure resistant FRP water pipes, chemical resistant pipes and storage tanks	UP,EP,VE,PF
316H	300-1200	Optic cables	UP,EP,VE
312T	4400-9600	Sucker Rod, high end pultrusion profile	EP

Product Images





FIBERGLASS SPRAY-UP ROVING

Fiberglass Spray Up Roving deliver properties of low static, excellent dispersion and good wet-out in resins. It is compatible with unsaturated polyester resins, vinyl ester resin and epoxy resin, it is used for spray up and centrifugal casting. It mainly used for producing GRP ships, sanitary ware, storage tanks and Hobas pipes, ect.

Product Specification

Product Code	Tex	Product Features	Typical Applications
176	2400 3600 4800	Good runnability for spraying operation, large dispersion area in spraying, slower wet out, less slide on a vertical surface, suitable for the production of large parts	Swimming pools, storage tanks, boats& yachts
180		Good runnability for spraying operation, moderate wet-out speed, easy roll-out, easy removal of bubbles, no spring back in sharp angles, excellent mechanical properties, and hydrolytic resistance in parts, suitable for high-speed spray-up process with robots	Sanitary ware, FRP hulls, auto parts, chemical storage tanks
180H		Fast wet-out, ideal for products with small surface	Bathtubs

Product Images





FIBERGLASS PANEL ROVING

Assembled Panel Rovings are coated with a silane-based sizing and compatible with UP and acrylic resins. They can fast wet-out in resin and deliver excellent dispersion after chopping.

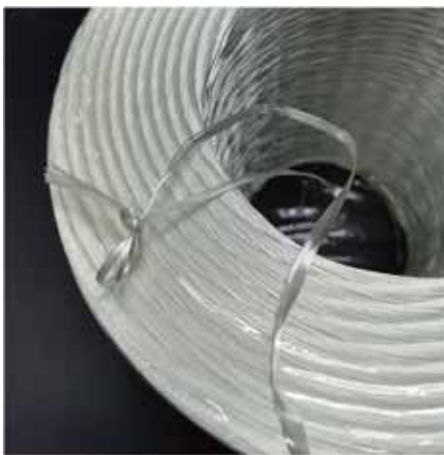
Continuous Panel Molding Process

A resin mix is uniformly deposited in a controlled amount onto a moving film at a constant speed. The thickness of the resin is controlled by the draw-knife. Fiberglass roving is chopped and uniformly distributed onto the resin. Then a top film is applied forming a sandwich structure. The wet assembly travels through a curing oven to form the composite panel.

Product Specification

Product Code	Tex	Compatible Resin	Product Features	Typical Applications
528s	2400 3200 4800	UP	Low static, fast wet-out, no white fibers	General purpose transparent FRP panels
872		UP MP MA	Extremely fast wet-out, no white fibers, superior transparency	High transparency FRP panels
872S		UP MP MA	Low static, moderate wet-out, excellent dispersion after chopping under low tension	Semi-transparent and opaque FRP panels

Product Images





FIBERGLASS ROVING FOR CHOPPING

Assembled Rovings for Chopping are coated with a special silane-based sizing and compatible with UP and VE resins. They are designed for pipe production, offering excellent water resistance and chemical corrosion resistance.

Product Specification

Product Code	Compatible Resin	Product Features	Typical Applications
162	UP,VE	Moderate wet-out	Continuous filament wound pipes
162k	UP,VE	Fast wet-out	Continuous filament wound pipes
162E	EP	Compatible with epoxy resin,high mechanical strength of composite products.	Continuous filament wound pipes

FIBERGLASS LFT ROVING

Direct Roving is specially designed for long fiber-glass thermoplastic (LFT) process and compatible with modified PP resin.

362J is designed for LFT-D(Long Fiberglass Reinforced Thermoplastics Direct/In-Line Compounding)

LFT-G(granulate) process and widely used in automotive construction sports electric and electronic applications.



Product Specification

Product Code	Tex	Product Features	Resin Compatibility	Typical Applications
362J	2400, 4800	Excellent choppability and dispersion, good mold flowability,high mechanical strength of composite products	PU	Unit Bathroom



FIBERGLASS SMC ROVING

Fiberglass SMC Roving is compatible with unsaturated polyester resin and vinyl ester resin. They deliver properties of good choppability and dispersion, low fuzz, good wet-out and good antistatic performance, mainly used for automobile parts, electrical appliance, tank crust and sport instruments, etc..

SMC Process

Mix the resins, fillers and other materials well to form a resin paste, apply the paste on a first film, disperse chopped glass fibers evenly on the resin paste film and cover this paste film with another layer of resin paste film, and then compact the two paste films with pressure rollers of a SMC machine unit to form sheet molding compound products.

Product Specification

Product Code	Tex	Product Features	Typical Applications
410J	2400 4400 4500 4800	SMC sanitary products with high boiling resistance	Unit Bathroom
440		General purpose SMC products	Automobile parts, electrical parts, building decoration, etc
440A		Car ceiling	Car ceiling
422K		SMC Products with high surface quality and easy coloring	waterproof board, water tank, electrical cabinet, etc
448		SMA structural parts with high strength and high glass fiber content	Automobile structural parts
456		SMC products with Grade-A surface	Automobile exterior
458		SMC products with high surface quality and easy coloring	Bathroom wares

Package

